

What is an electric easement?

It's an area or strip of land GVEC uses to construct, upgrade, repair and maintain electrical lines and equipment. So, if you receive electricity from GVEC, you have an easement on your property.

For safety's sake and the best possible electric service— it's important easements be kept clear so GVEC crews can access overhead and underground lines. Trees, structures and other encroachments in easements can:

- Create safety hazards.
- Cause power outages.
- Result in damage to electric equipment.
- Make repairs more difficult and extend outage time.
- Block access, causing service delays.



Call DIG TESS: 811 for quick dial or 800-DIG-TESS for direct service!

We understand why someone would want to hide electrical equipment with foliage or make a yard seem larger by using an adjacent utility easement for a playground or storage building. But unfortunately, this can pose a safety hazard for you, result in personal injury or damaged electrical equipment, and keep us from doing our job.

If you have any questions, don't hesitate to call us. We appreciate your understanding and help in keeping easements clear, so we can continue to provide the reliable service you and your neighbors depend on.

Who Has the Right-of-Way?

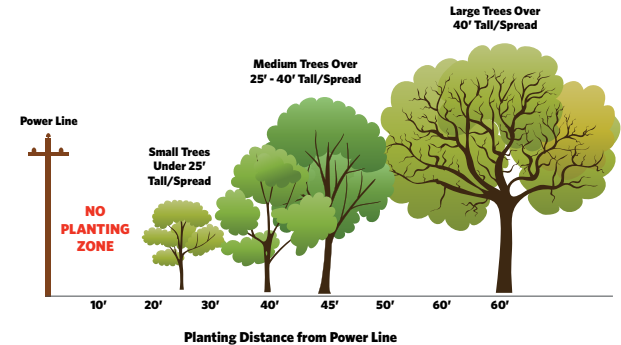
Even though a property owner may own the land in the easement, there are legal restrictions on how easements may be used. It all comes down to safety and service.

For example, unauthorized uses of the easement include constructing buildings, sheds and swimming pools under a power line or on top of buried, underground lines. Encroachments also include structures such as barns, garages, building extensions, above-ground fuel tanks, tall signs, billboards, and even tall trees in easements. Soil mounds and road construction that change the ground elevation are also considered encroachments.

Prepare Before Digging

If you're considering a project, first call 1-800-DIG-TESS for direct service (or 811 for quick dial) for your protection. It's a free service to help you locate any utilities on your property. Then call us at 800.223.GVEC (4832) and ask for our Field Services Department if you need assistance with easement requirements or mapping the easements on your property. If you'll be digging near electric lines, for your safety we can also temporarily disconnect your service. Remember, topographic changes to the land or a variance request of any type requires GVEC's review and approval in writing in advance.

Plan ahead: Plant vegetation away from power lines so at maturity, branches won't grow into the easement area. Otherwise, it will be at risk for removal due to power line maintenance, repair and replacement.



Think deep: Roots can interfere with equipment, and vegetation may impede repair and maintenance. Keep areas clear around pad-mount transformers (big green boxes). Plant shrubs and flowers at least 3 to 4 feet away from the back and sides, and 12 feet from the front of pad-mount transformers.

Remember: Call 1-800-DIG-TESS or 811 before starting any digging project. The appropriate agencies will be alerted to locate all underground utilities on your property within 48 hours. This free service can save a life, and it's the law. If Dig Tess is not contacted, utility line damages become the financial responsibility of the homeowner.